



# INVESTOR CONFERENCE

**TITLE: TAKING IMPACT INVESTING MAINSTREAM – IS 2017 THE YEAR?**

**DATE: 1<sup>ST</sup> FEBRUARY 2017 TIME: 8.30AM - 2.30PM**

**VENUE: DUTCH HALL, 7 AUSTIN FRIARS, LONDON, EC2N 2HA**

.....

The Social Stock Exchange will be hosting its annual Investor Conference on the 1st February 2017 at the beautiful Dutch Hall in the heart of the City. With a focus firmly on the UK's leading position as a champion of organisations addressing social and environmental issues, experts from the fields of business and sustainability will discuss aligning values with investments, turning good intentions into successful investment strategies and making the most of the wealth of opportunities that exist in this fast-growing market.

The 4<sup>th</sup> Social Stock Exchange Investor Conference will also provide practical insights into member impact businesses seeking investment, and will be a celebration of London and the regions playing a crucial role in taking impact investing to the next level.

### **Proposed Agenda:**

08.30 – 09.00: Registration & Breakfast

09.00 – 09.10: 'Welcome'

09.10 – 09.25: **Keynote 1:** 'Why London is driving investment into organisations putting social and environmental issues at the forefront of their commercial aspirations?'

09.25 – 10.20: **Panel Session 1:** 'Turning good intentions into a comprehensive investment strategy'

10.20 – 10.50: Pitching Session

10.50 – 11.20: Coffee break

11.20 – 11.35: **Keynote 2:** 'Growth Britain – harnessing investment and technology to benefit all generations'

11.35 – 12.30: **Panel Session 2:** 'Impact in Action – success stories from the frontline'

12.30 – 12.45: Closing Remarks

12.45 – 14.30: Lunch & Networking

### **Confirmed speakers so far:**

**Tomás Carruthers**, CEO – Social Stock Exchange

**Nigel Wilson**, CEO – Legal & General

**Colin Melvin**, Former Head of Global Stewardship – Hermes Investment Management

**Marga Hoek**, CEO – Business for Good

**Lisa Wong**, Head of New Strategies and Impact – Affirmative Investment Management

**Esther Gilmore**, Partner – Generation Investment Management

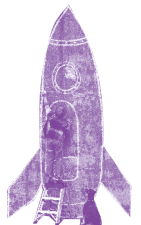
**Daniel Godfrey**, Co-Founder – The People's Trust

**Gordon Power**, Chairman – Sustainable Technology Investors Ltd (STIL)

**Matthew Clayton**, Managing Director – Thrive Renewables

**(Speaker TBC)** – JPMorgan Private Bank

**(Speaker TBC)** – Blackrock



**A new kind of business is taking off**